

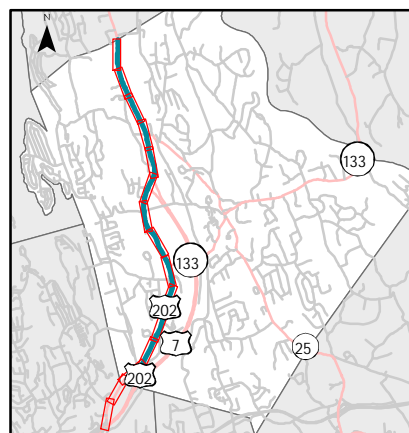
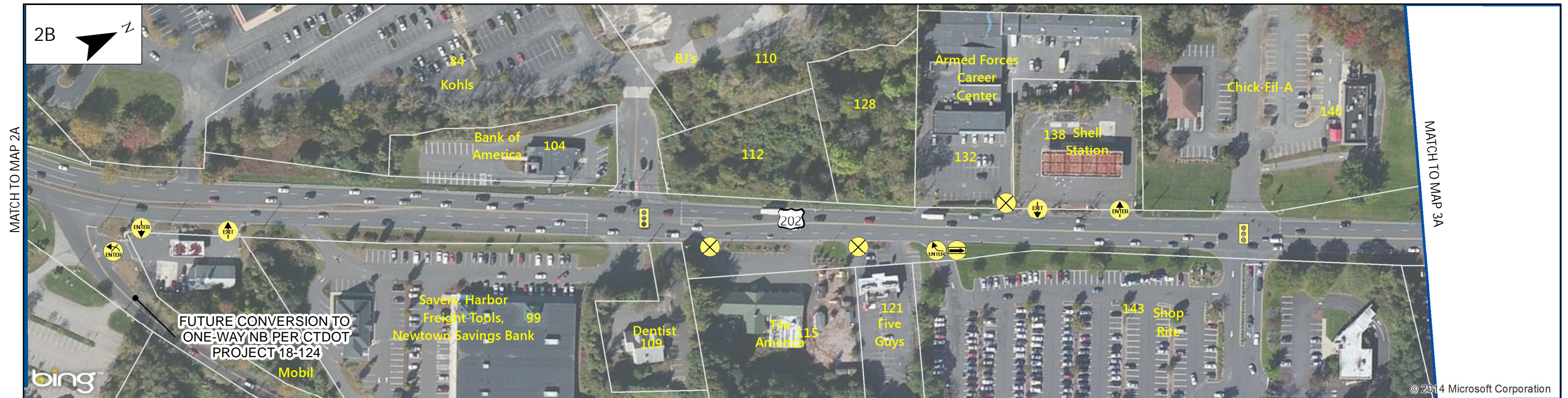
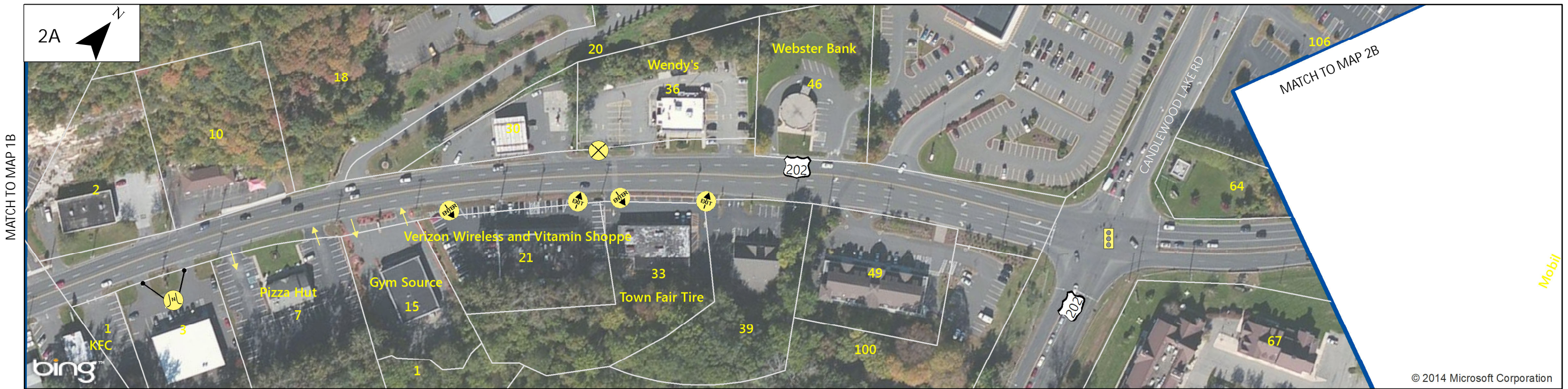
| | | | |
|---|---|--|--|
| Approximate Parcel Lines Potential Roadway or Driveway Configuration Existing Driveway Direction Existing Traffic Signal Close Existing Driveway or Roadway | Continue Sidewalk Across Driveway Prohibit Parking Define Driveway Create or Improve Interconnection Improve Signing and Pavement Markings for One-Way Driveway | Narrow Existing Driveway Consolidate Driveway Prohibit Left-Turn Exit Convert Two-Way to One-Way Entry Convert Two-Way to One-Way Exit | Convert to Right-Turn Entry Only Convert to Right-Turn Exit Only Improve Sight Line Looking Left from Driveway Improve Sight Line Looking Right from Driveway |
|---|---|--|--|

Data Sources | Parcels, Utilities, Pavement Boundaries, Sidewalks: Town of Brookfield (2013-14)
 Roads: Streetmap USA (2011) Aerial: Microsoft (2011) Field Observations: Milone & MacBroom (2014)

Route 202 Driveway Management Plan

Figures 1A and 1B Sheet 1 of 8 August 2014

0 125 250 375 500 Feet



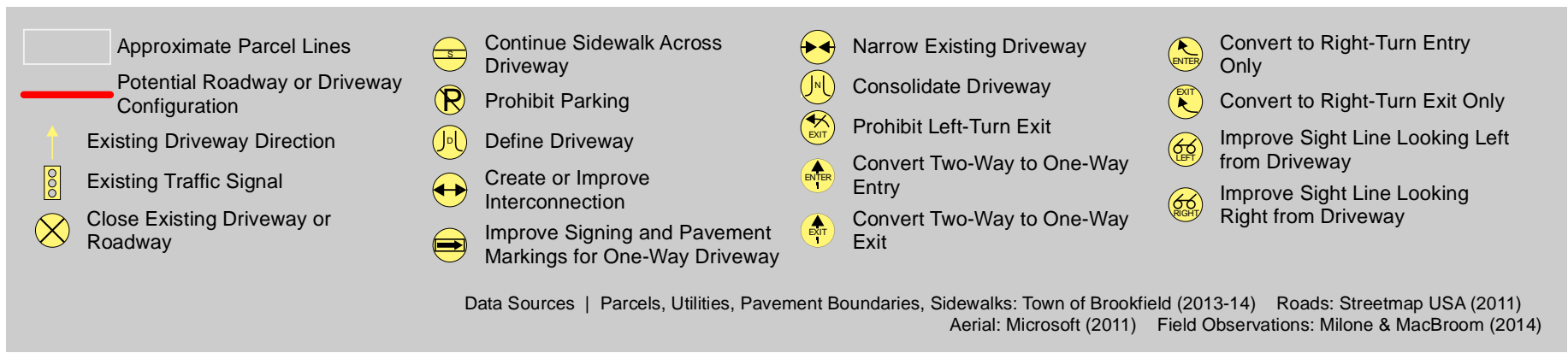
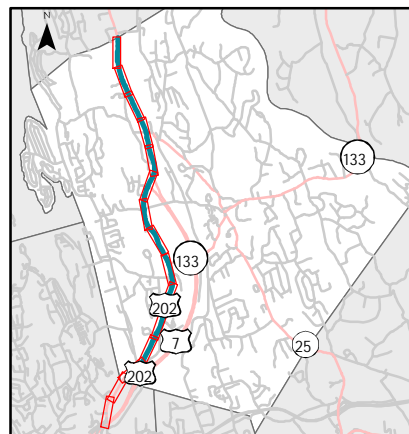
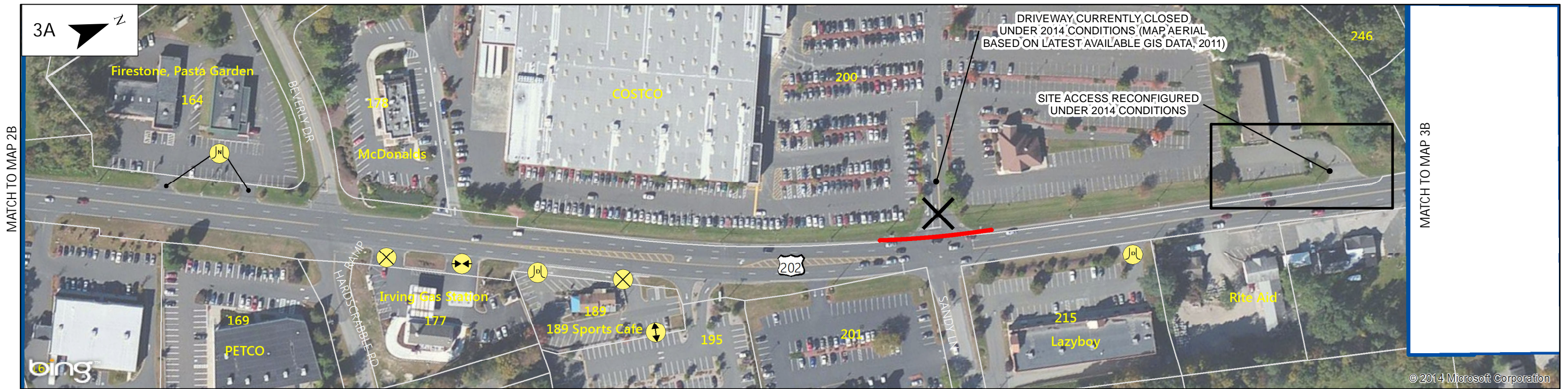
- | | | | |
|---|--|----------------------------------|--|
| Approximate Parcel Lines | Continue Sidewalk Across Driveway | Narrow Existing Driveway | Convert to Right-Turn Entry Only |
| Potential Roadway or Driveway Configuration | Prohibit Parking | Consolidate Driveway | Convert to Right-Turn Exit Only |
| Existing Driveway Direction | Define Driveway | Prohibit Left-Turn Exit | Improve Sight Line Looking Left from Driveway |
| Existing Traffic Signal | Create or Improve Interconnection | Convert Two-Way to One-Way Entry | Improve Sight Line Looking Right from Driveway |
| Close Existing Driveway or Roadway | Improve Signing and Pavement Markings for One-Way Driveway | Convert Two-Way to One-Way Exit | |

Data Sources | Parcels, Utilities, Pavement Boundaries, Sidewalks: Town of Brookfield (2013-14) Roads: Streetmap USA (2011) Aerial: Microsoft (2011) Field Observations: Milone & MacBroom (2014)

Route 202 Driveway Management Plan

Figures 2A and 2B Sheet 2 of 8 August 2014

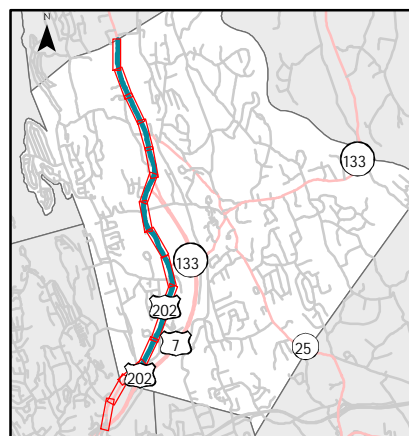




Route 202 Driveway Management Plan

Figures 3A and 3B Sheet 3 of 8 August 2014





- Approximate Parcel Lines
- Potential Roadway or Driveway Configuration
- Existing Driveway Direction
- Existing Traffic Signal
- Close Existing Driveway or Roadway

- Continue Sidewalk Across Driveway
- Prohibit Parking
- Define Driveway
- Create or Improve Interconnection
- Improve Signing and Pavement Markings for One-Way Driveway

- Narrow Existing Driveway
- Consolidate Driveway
- Prohibit Left-Turn Exit
- Convert Two-Way to One-Way Entry
- Convert Two-Way to One-Way Exit

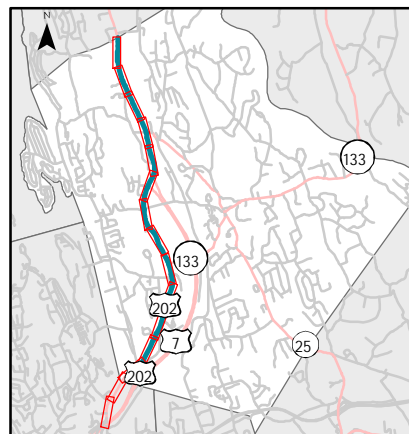
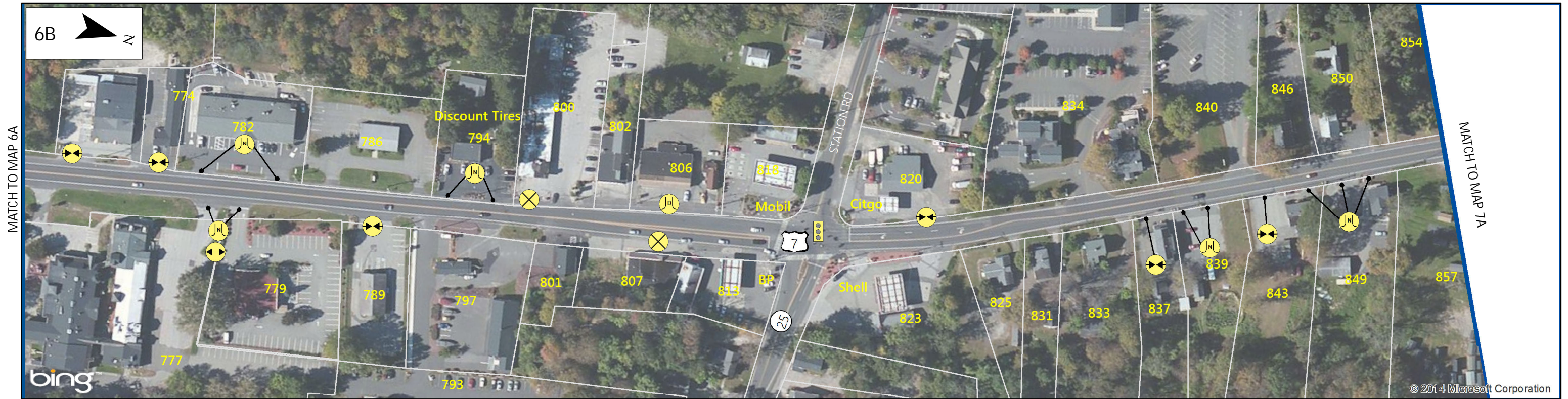
- Convert to Right-Turn Entry Only
- Convert to Right-Turn Exit Only
- Improve Sight Line Looking Left from Driveway
- Improve Sight Line Looking Right from Driveway

Data Sources | Parcels, Utilities, Pavement Boundaries, Sidewalks: Town of Brookfield (2013-14) Roads: Streetmap USA (2011) Aerial: Microsoft (2011) Field Observations: Milone & MacBroom (2014)

Route 202 Driveway Management Plan

Figures 4A and 4B Sheet 4 of 8 August 2014



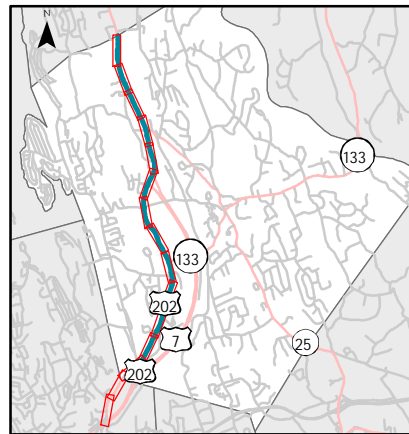


| | | | |
|---|---|--|--|
| Approximate Parcel Lines Potential Roadway or Driveway Configuration Existing Driveway Direction Existing Traffic Signal Close Existing Driveway or Roadway | Continue Sidewalk Across Driveway Prohibit Parking Define Driveway Create or Improve Interconnection Improve Signing and Pavement Markings for One-Way Driveway | Narrow Existing Driveway Consolidate Driveway Prohibit Left-Turn Exit Convert Two-Way to One-Way Entry Convert Two-Way to One-Way Exit | Convert to Right-Turn Entry Only Convert to Right-Turn Exit Only Improve Sight Line Looking Left from Driveway Improve Sight Line Looking Right from Driveway |
|---|---|--|--|

Data Sources | Parcels, Utilities, Pavement Boundaries, Sidewalks: Town of Brookfield (2013-14) Roads: Streetmap USA (2011) Aerial: Microsoft (2011) Field Observations: Milone & MacBroom (2014)

Route 202 Driveway Management Plan

Figures 6A and 6B Sheet 6 of 8 August 2014



| | | | |
|---|---|--|--|
| <ul style="list-style-type: none"> Approximate Parcel Lines Potential Roadway or Driveway Configuration Existing Driveway Direction Existing Traffic Signal Close Existing Driveway or Roadway | <ul style="list-style-type: none"> Continue Sidewalk Across Driveway Prohibit Parking Define Driveway Create or Improve Interconnection Improve Signing and Pavement Markings for One-Way Driveway | <ul style="list-style-type: none"> Narrow Existing Driveway Consolidate Driveway Prohibit Left-Turn Exit Convert Two-Way to One-Way Entry Convert Two-Way to One-Way Exit | <ul style="list-style-type: none"> Convert to Right-Turn Entry Only Convert to Right-Turn Exit Only Improve Sight Line Looking Left from Driveway Improve Sight Line Looking Right from Driveway |
|---|---|--|--|

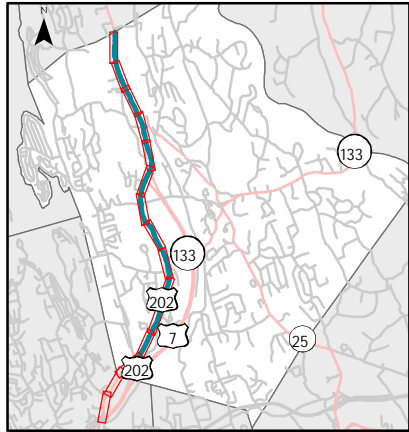
Data Sources | Parcels, Utilities, Pavement Boundaries, Sidewalks: Town of Brookfield (2013-14) Roads: Streetmap USA (2011) Aerial: Microsoft (2011) Field Observations: Milone & MacBroom (2014)

Route 202 Driveway Management Plan

Figures 7A and 7B Sheet 7 of 8 August 2014

0 125 250 375 500 Feet

MATCH TO MAP 7B



Approximate Parcel Lines

Potential Roadway or Driveway Configuration

Existing Driveway Direction

Existing Traffic Signal

Close Existing Driveway or Roadway

Continue Sidewalk Across Driveway

Prohibit Parking

Define Driveway

Create or Improve Interconnection

Improve Signing and Pavement Markings for One-Way Driveway

Narrow Existing Driveway

Consolidate Driveway

Prohibit Left-Turn Exit

Convert Two-Way to One-Way Entry

Convert Two-Way to One-Way Exit

Convert to Right-Turn Entry Only

Convert to Right-Turn Exit Only

Improve Sight Line Looking Left from Driveway

Improve Sight Line Looking Right from Driveway

Data Sources |

Parcels, Utilities, Pavement Boundaries, Sidewalks: Town of Brookfield (2013-14)

Roads: Streetmap USA (2011)

Aerial: Microsoft (2011)

Field Observations: Milone & MacBroom (2014)

Route 202 Driveway Management Plan

Figures 8A Sheet 8 of 8 August 2014

0

125

250

375

500

Feet